

SPECIFICATION DATA SHEET

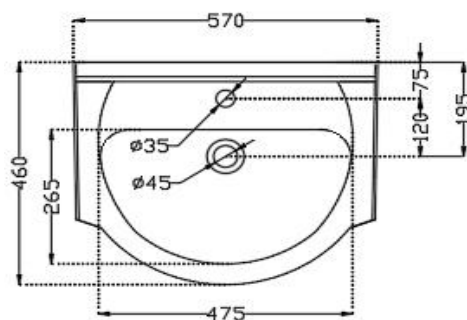
PRODUCT DETAILS

Manufacturer :	ESSCO	Type:	Semi Recessed Basin
Outlet	Vertical	Colour:	White
Technical Details:	Tap hole dia. $\varnothing 35 \pm 2$ mm	Material:	Ceramic - Vitreous China
	ID of waste outlet hole dia. $\varnothing 45 \pm 3$ mm		
	Horizontal distance between the center line of the tap hole and the center line of the waste outlet hole ≤ 120 mm		

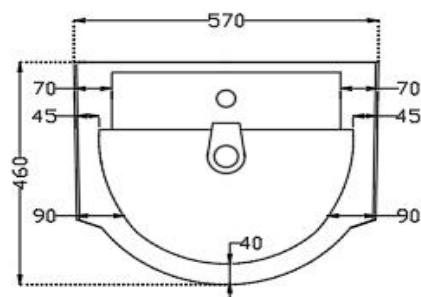
PRODUCT IMAGE



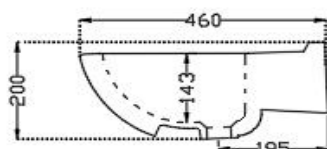
TECHNICAL DRAWING



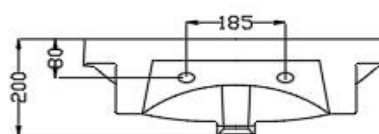
TOP VIEW



BOTTOM VIEW



SIDE VIEW



BACK VIEW

Product Dimension	570x460x200 mm	FEATURES
Basin Inner Dimension	265X475X145 mm	
Product Weight	12.0 kg	

Semi Recessed Basin with tap hole and overflow hole having soft edges, anti germ glaze and can also be used as a wall hung basin also.

ACCESSORIES INCLUDED

Overflow hole Cap

ZPS-WHT-9012B

CERTIFICATION

All technical dimensions are in accordance to British standards, Bureau of Indian Standards

DISCLAIMER: Our every effort has been made to ensure factual accuracy, the information presented subject to changes due to requirements in different sites, markets and/ or countries. All dimensions are in mm (Tolerance ± 5 MM). Jaguar reserves the right to make the necessary amendments at any time without prior notice.